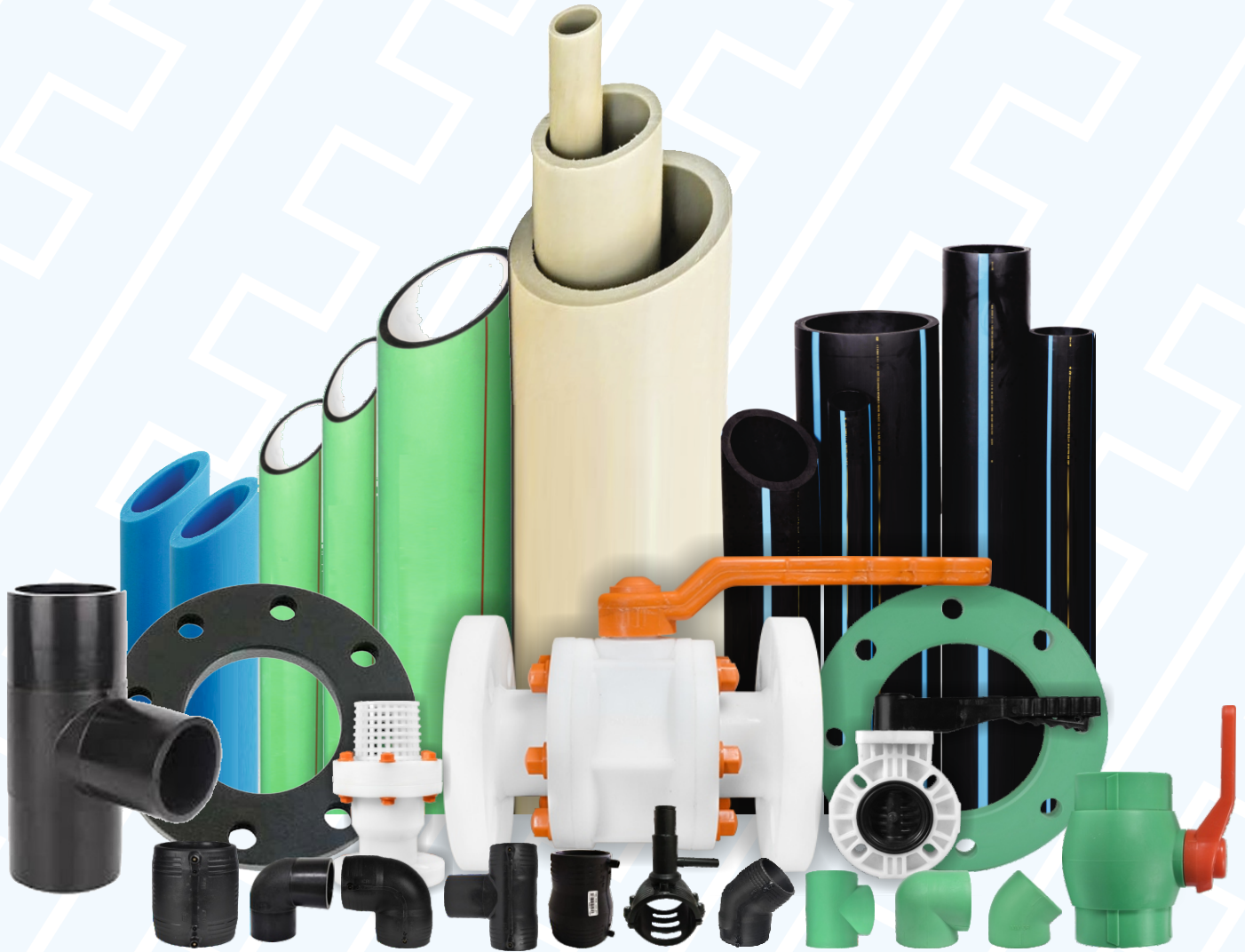




Chamunda
Plastic Pvt. Ltd.



COMMITTED TO QUALITY

STRONGER MATERIALS | **FOR A BETTER RESULTS**

PIPES | PIPE FITTINGS | VALVES | INDUSTRIAL PRODUCTS

COMPANY INTRODUCTION

Chamunda Plastic Pvt. Ltd. is one of the Quality Oriented Manufacturers since 1999 for the complete range of HDPE/MDPE/PP/PPH/PVDF/PPR pipes. Company also offers a complete range of HDPE/MDPE/PP/PPR/PPH/PVDF Pipe Fittings and Valves. Our range includes Pipes ranging from 20mm to 400mm, fitting ranging from 20mm to 630mm and all type of valves ranging from 0.5" to 12"

Our Products well appreciated and accepted in the Chemical, Pharma, Salt, Slurry, Beverages, Irrigation, Agriculture and Govt. Project Consultancy across India and Abroad.



QUALITY SYSTEM & QUALITY CONTROL

Chamunda Plastic Pvt. Ltd. believes in adhering to the highest Quality Assurance system supports and ensures highest quality in the industry for the products manufactured with timely supply to our customers which meet the requirement completely. Chamunda Plastic Pvt. Ltd. products are stringently checked at each stage of the production as well as post production process.

We satisfy the requirements of our clients by foreseeing their future demands, by maintaining a constant relationship with our customers & understanding their exact requirements.



SUPPORT & INFRASTRUCTURE

Support and Infrastructure Our infrastructure plays an important role in enabling us to meet the exact requirements and standards of the industry. We are empowered by a sophisticated infrastructure, supported by highly experienced professionals.

All our equipment and machinery incorporate the latest technologies that enable us to maintain our competitive edge in the market.



OUR CLIENTS

We cater to a wide and expanding network of clients, spread all across the India and Abroad.

Our presence in many chemical and pharmaceuticals companies in India as well as abroad is a result of the Quality Product, Cost Effectiveness and our Services to make our Customers Successful using CPI products. Chamunda Plastic Pvt. Ltd. dealers are spread across India.

CERTIFIED



ISO 9001:2015



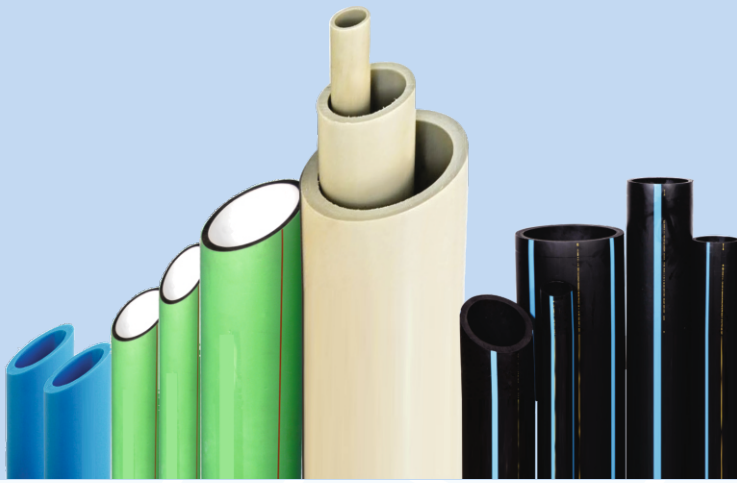
IS 4984:1995



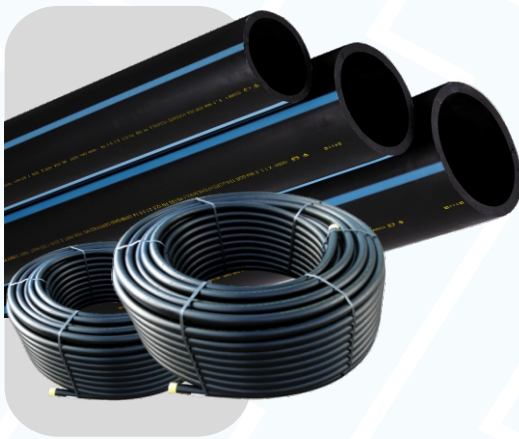
IS 15801:2008

INDEX

PIPES	03
- HDPE PIPES	03
- MDPE PIPES	03
- PPRC PIPES	04
- PP PIPES	04
- PVDF PIPES	05
- PPH PIPES	05
HDPE FITTINGS	06
ELECTRO FUSION FITTINGS	07
SPIGOT FITTINGS	08
PPH FITTINGS	09
PPRC FITTINGS	10
PPRC FITTINGS	11
PP FITTINGS	12
PVDF FITTINGS	13
COMPRESSION FITTINGS	14
VALVES	15
ENGINEERING ITEMS	16
WELDING PROCESS	17
OUR CLIENTS	18
APPLICATION	19



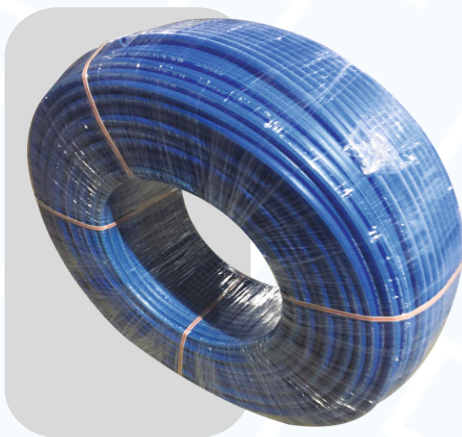
HDPE PIPES



We are considered a prominent HDPE Pipes Manufacturer, Exporter and Supplier from India. Our HDPE Pipes are manufactured using High Density Polyethylene that ensures their flawless performance and long functional life. These pipes are quite useful for carrying potable water, slurries, hazardous wastes, wastewater, cables, chemicals and compressed gases as well as oils.

Manufacturing Range : 20 mm OD to 400 mm OD
Grade : PE - 63, PE - 80, PE - 100
Standards : IS 4984 - 2016, ISO - 4427
: PN-2.5 TO PN-10

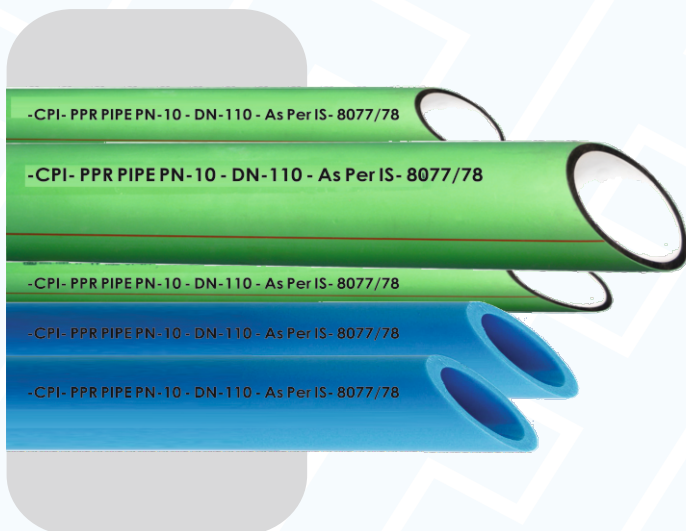
MDPE PIPES



Medium Density Polyethylene Pipe is Used for drinking water and house tap connection.

Manufacturing Range : 20 mm OD to 50 mm OD
Grade : PE - 80, SDR-9, SDR-11
Standards : ISO - 4427
: PN-10 TO PN-16

PPRC PIPES



Manufacturing Range : 20 mm OD to 400 mm OD
SDR : SDR-7.4 TO 11
Standards : IS 15801:2008 ISO:8077/78
: PN-10 TO PN-16

CHAMUNDA PLASTIC PVT. LTD. vast experience of 2 decades and research has developed an ultimate piping solution for industrial Piping has been developed for all applications such as Chemical applications, water line, Air Lines, Fire and Safety, Raw water, R.O. water, Condensate line, higher and lower temperature applications, all types of utility line and process lines.

CHAMUNDA PLASTIC PVT. LTD. PIPE Manufacturer, Exporter and Supplier from India It is a semi-rigid, translucent polymer with good toughness and weather resistance properties, low water absorption and is easily moulded to desired shapes. PP is a largely non-polar, partially crystalline thermoplastic with a crystallinity of 60 to 70% and a density of 0.90 to 3 0.91 g/cm which is amongst the lowest for all plastics.

High Thermal Resistance: Less vulnerable to weathering
High Stress Crack Resistance: Prevents inching growth of cracks

Manufacturing Range : 20 mm OD to 400 mm OD
Standards : ISO-8077/78

PP PIPES



PVDF PIPES

We make Polyvinylidene Fluoride (PVDF) is a tough engineering thermoplastic that offer a unique balance of performance properties. Polyvinylidene Fluoride (PVDF), thermopolymer of 1,1-difluoroethylene, is a tough engineering thermoplastic. pvdf has the characteristic properties of high resistance to chemical attacks intrinsic to all fluoropolymers based on the very high strength go the carbon - Fluorine atom bond

Description :

Resistance to most chemicals and solvents.

Exceptional out door weather resistance due to its total inertness to UV Radiation

Mechanical Strength and Toughness.

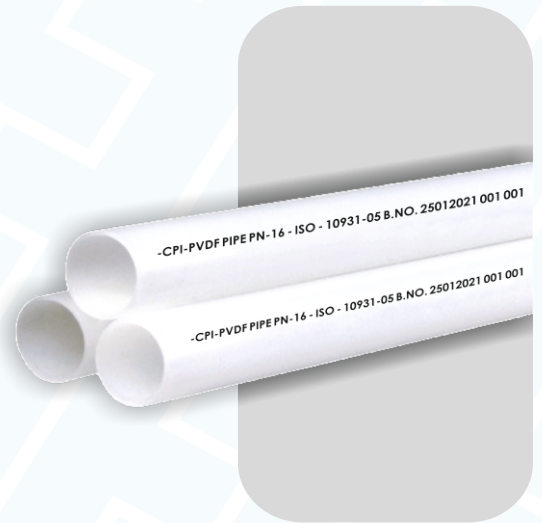
Very smooth surface can be obtained.

High Abrasion Resistance.

Application :

Corrosion Protection in the chemical Industry | Handling Bromine | Specialty Chemicals | Insecticides Plants | Chloro Alkali Plant, Sugar Industry | High Purity applications | Paper & Pulp Industry | Phosphoric acid | Chromic Acid | Nitric Acid | Sulphuric acid

Manufacturing range : 20 mm OD to 160 mm OD



PPH PIPES

PPH - Polypropylene Homopolymer shows a high mechanical strength,

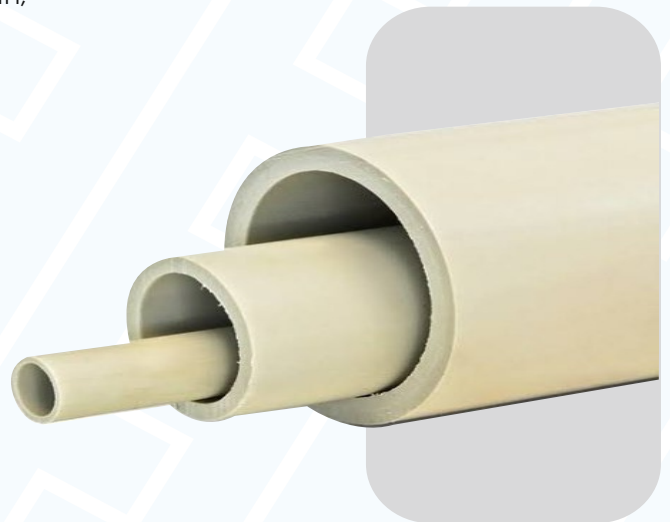
- High impact strength, but a low notched impact strength.
- PP resists stress cracking and it is easy to weld.
- High Thermal and stress, crack Resistance
- Non Toxic, Food grade
- Excellent Chemical Resistance The working temperature ranges between +5°C and 100°C.

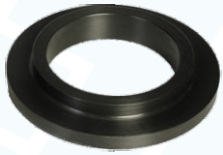
Application :

- Metallurgy Plants
 - Chemical Industry
 - Fluorochemical Industry
 - Phosphoric acid plants
 - Steel Plants
 - Chemical waste treatment plants
 - Oil manufacturing plants, Pickling lines
- Textile Industry

Manufacturing range : 20 mm OD to 400 mm OD

Standards : As Per DIN - 8077 / 78





Short Neck Stub End

Mfg Range : 20 mm OD to 630 mm OD



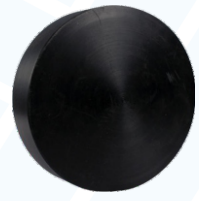
Long Neck Stub End

Mfg Range : 20 mm OD to 630 mm OD



Slip-on Flange

Mfg Range : 20 mm OD to 630 mm OD



Blind Flange

Mfg Range : 20 mm OD to 630 mm OD



Sandwich Flange

Mfg Range : 32 mm OD to 315 mm OD



Paddle Flange

Mfg Range : 75 mm OD to 315 mm OD



Weld Neck Flange

Mfg Range : 75 mm OD to 200 mm OD



Bend (6 Kg. & 10 Kg.)

Mfg Range : 20 mm OD to 160 mm OD



Tee (6 Kg. & 10 Kg.)

Mfg Range : 20 mm OD to 160 mm OD



Reducer

Mfg Range : 32 mm OD to 315 mm OD



End Cap

Mfg Range : 63 mm OD to 450 mm OD



Tail Piece

Mfg Range : 32 mm OD to 160 mm OD



Tail Piece With Flange

Mfg Range : 32 mm OD to 110 mm OD



ELECTROFUSION FITTINGS



Electrofusion Tee

Mfg Range : 50 mm OD to 110 mm OD
IN KIT : 125 mm OD to 315 mm OD



Electrofusion Elbow 90°

Mfg Range : 50 mm OD to 110 mm OD
IN KIT : 125 mm OD to 315 mm OD



Electrofusion Coupler

Mfg Range : 20 mm OD to 315 mm OD



Electrofusion End Cap

Mfg Range : 32 mm OD to 110 mm OD
IN KIT : 125 mm OD to 315 mm OD



Electrofusion Elbow 45°

Mfg Range : 32 mm OD to 110 mm OD
IN KIT : 125 mm OD to 315 mm OD



Stub End (180 mm Long)

Mfg Range : 32 mm OD to 315 mm OD



Electrofusion Tapping Tee

Mfg Range : 63 mm OD to 160 mm OD



Electrofusion Saddle

Mfg Range : 63 mm OD to 160 mm OD



Electrofusion Reducer

Mfg Range : 20 mm OD to 110 mm OD
IN KIT : 125 mm OD to 315 mm OD

SPIGOT FITTINGS



Spigot End Cap

Mfg Range : 20 mm OD to 160 mm OD



Bend (Spigot Type) (6 Kg. & 10 Kg.)

Mfg Range : 20 mm OD to 315 mm OD



Tee (Spigot Type) (6 Kg. & 10 Kg.)

Mfg Range : 20 mm OD to 315 mm OD



Sandwich Flange

Mfg Range : 20 mm OD to 315 mm OD



Spigot Reducing Tee

Mfg Range : 63 mm OD to 315 mm OD



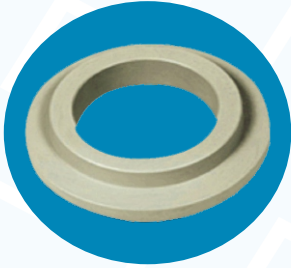
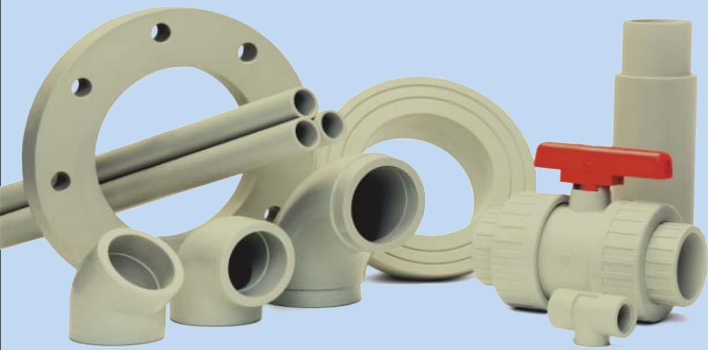
Spigot Elbow 45 Degree

Mfg Range : 20 mm OD to 315 mm OD



Reducer (Spigot Type)

Mfg Range : 20 mm OD to 315 mm OD



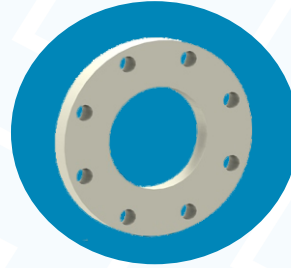
Short Neck Stub End

Mfg Range : 20 mm OD to 400 mm OD



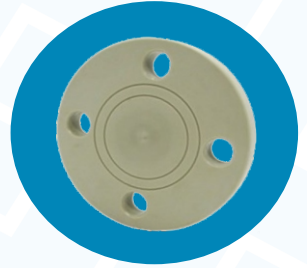
Long Neck Stub End

Mfg Range : 20 mm OD to 400 mm OD



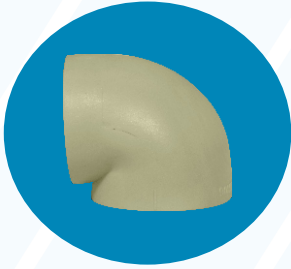
Slip-on Flange

Mfg Range : 20 mm OD to 400 mm OD



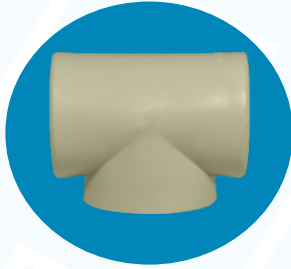
Blind Flange

Mfg Range : 20 mm OD to 400 mm OD



Bend Socket Weld (6 Kg. & 10 Kg.)

Mfg Range : 20 mm OD to 160 mm OD



Tee Socket Weld (6 Kg. & 10 Kg.)

Mfg Range : 20 mm OD to 160 mm OD



Bend (Spigot Type) (6 Kg. & 10 Kg.)

Mfg Range : 63 mm OD to 315 mm OD



Tee (Spigot Type) (6 Kg. & 10 Kg.)

Mfg Range : 63 mm OD to 315 mm OD



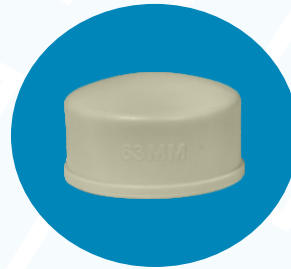
Reducing Tee (Socket & But weld)

Mfg Range : 32 mm OD to 315 mm OD



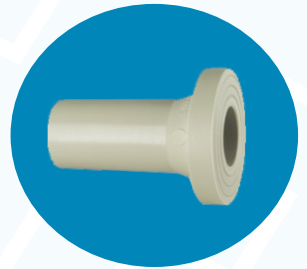
Reducer (Socket & But weld)

Mfg Range : 20 mm OD to 400 mm OD



End Cap (Socket & But weld)

Mfg Range : 20 mm OD to 400 mm OD



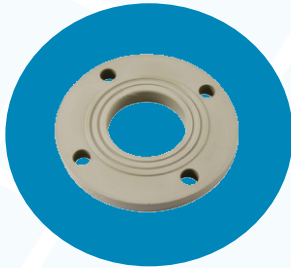
Tail Piece

Mfg Range : 32 mm OD to 315 mm OD



Core Flange

Mfg Range : 32 mm OD to 160 mm OD



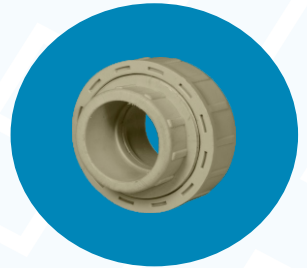
PPH Sandwich Flange

Mfg Range : 20 mm OD to 315 mm OD



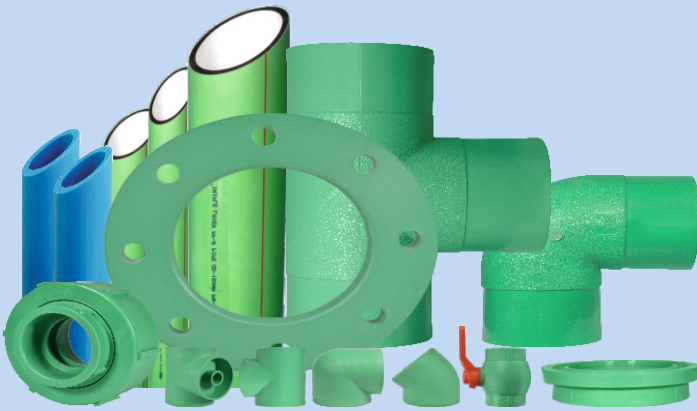
PPH Coupler

Mfg Range : 20 mm OD to 160 mm OD



PPH Union

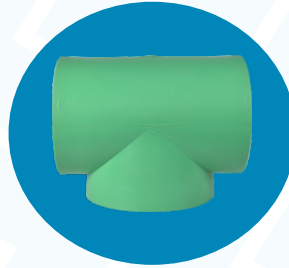
Mfg Range : 20 mm OD to 63 mm OD



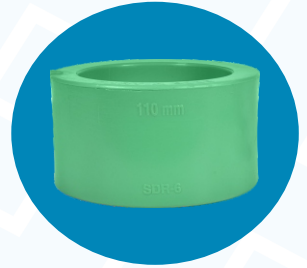
Bend (90 Degree)
Mfg Range : 20 mm OD to 160 mm OD



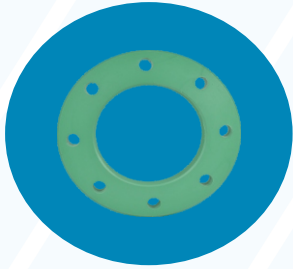
Bend (45 Degree)
Mfg Range : 20 mm OD to 160 mm OD



Tee
Mfg Range : 20 mm OD to 160 mm OD



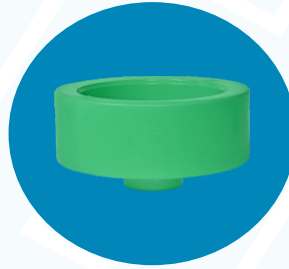
Coupler
Mfg Range : 20 mm OD to 160 mm OD



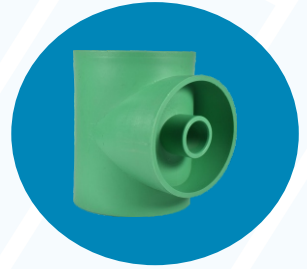
Slip On Flange
Mfg Range : 20 mm OD to 400 mm OD



Core Flange (LN)
Mfg Range : 20 mm OD to 160 mm OD



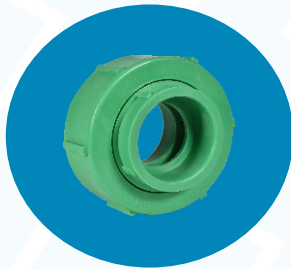
Reducer
Mfg Range : 20 mm OD to 160 mm OD



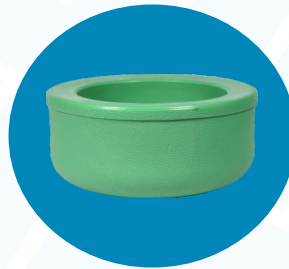
Reducing Tee
Mfg Range : 20 mm OD to 160 mm OD



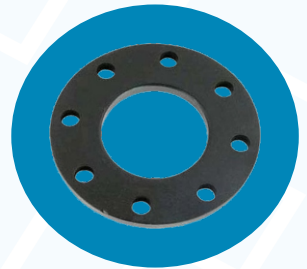
Ball Valves
Mfg Range : 1/2" to 2 1/2"



Union
Mfg Range : 20 mm OD to 63 mm OD



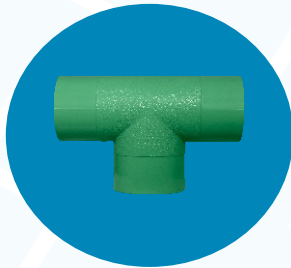
End Cup
Mfg Range : 20 mm OD to 160 mm OD



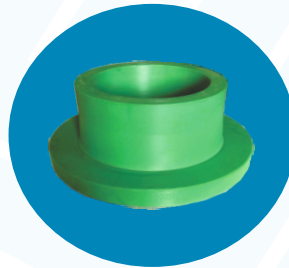
Ms Powder Coated Flange
Mfg Range : 20 mm OD to 160 mm OD



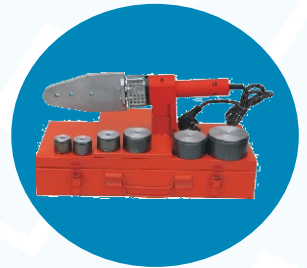
Spigot Elbow
Mfg Range : 63 mm OD to 315 mm OD



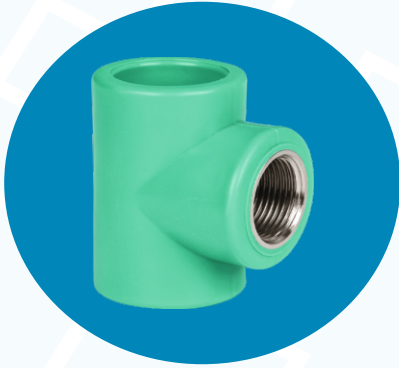
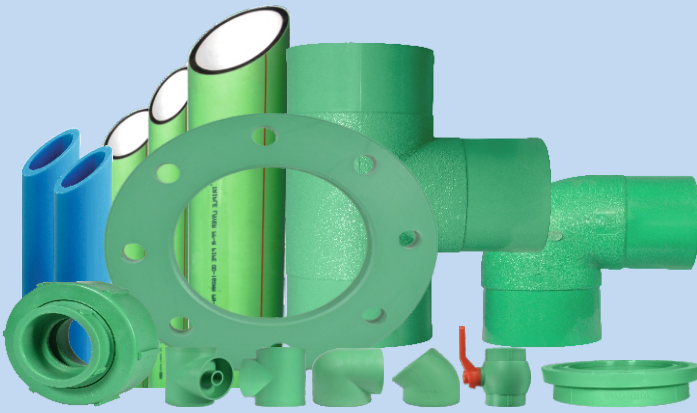
Spigot Tee
Mfg Range : 63 mm OD to 315 mm OD



Long Neck
Mfg Range : 125 mm OD to 400 mm OD



Welding Machine Die
Mfg Range : 20 mm to 160 mm



Female Thread Tee
Mfg Range : 20 mm OD to 32 mm OD



Male Thread Elbow
Mfg Range : 20 mm OD to 32 mm OD



Female Thread Elbow
Mfg Range : 20 mm OD to 32 mm OD



Male Thread Adaptor
Mfg Range : 20 mm OD to 63 mm OD

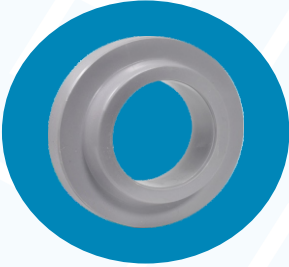
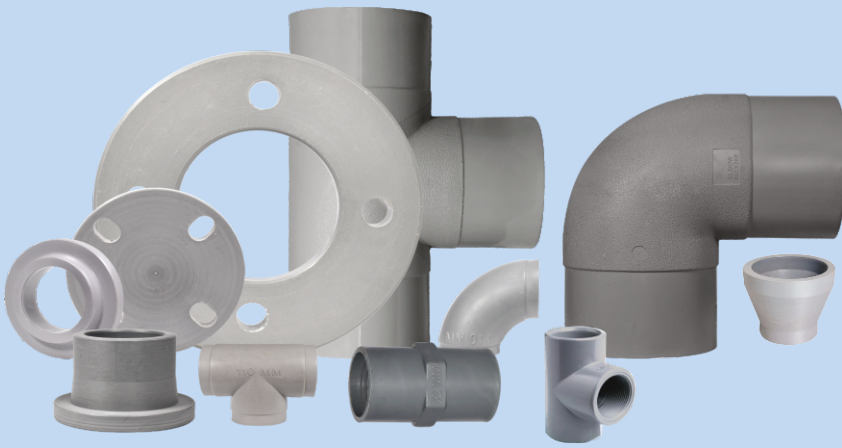


Male Thread Tee
Mfg Range : 20 mm OD to 32 mm OD



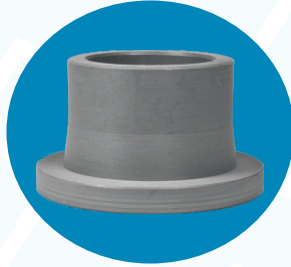
Female Thread Adaptor
Mfg Range : 20 mm OD to 63 mm OD





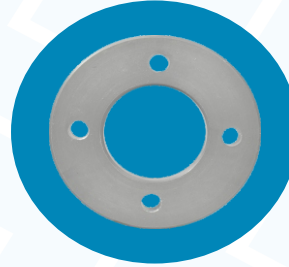
Short Neck Stub End

Mfg Range : 20 mm OD to 500 mm OD



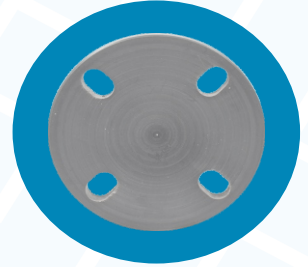
Long Neck Stub End

Mfg Range : 20 mm OD to 500 mm OD



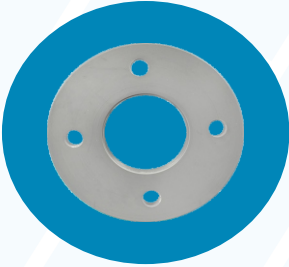
Slip-on Flange

Mfg Range : 20 mm OD to 630 mm OD



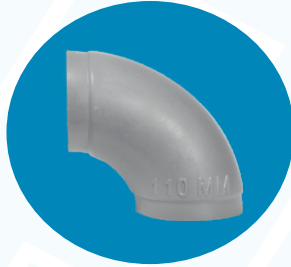
Blind Flange

Mfg Range : 20 mm OD to 630 mm OD



Threaded Flange

Mfg Range : 20 mm OD to 315 mm OD



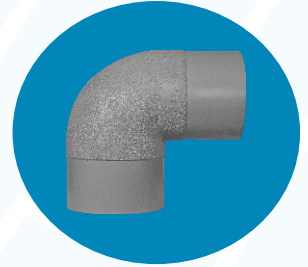
Bend (6 Kg. & 10 Kg.)

Mfg Range : 20 mm OD to 160 mm OD



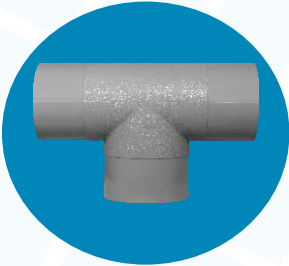
Tee (6 Kg. & 10 Kg.)

Mfg Range : 20 mm OD to 160 mm OD



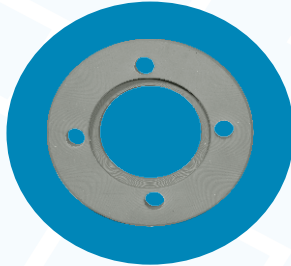
Bend (Spigot Type) (6 Kg. & 10 Kg.)

Mfg Range : 63 mm OD to 315 mm OD



Tee (Spigot Type) (6 Kg. & 10 Kg.)

Mfg Range : 63 mm OD to 315 mm OD



Tail Piece Flanged

Mfg Range : 32 mm OD to 315 mm OD



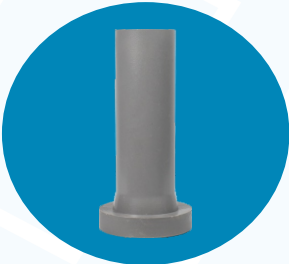
Reducer

Mfg Range : 20 mm OD to 630 mm OD



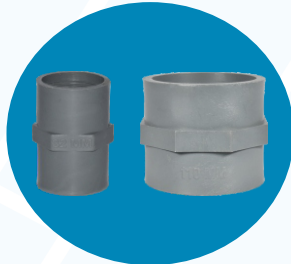
End Cap

Mfg Range : 63 mm OD to 400 mm OD



Tail Piece

Mfg Range : 32 mm OD to 315 mm OD

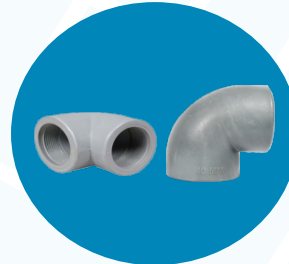


Socket (Plain)

Mfg Range : 20 mm OD to 200 mm OD

Socket (Threaded)

Mfg Range : 20 mm OD to 63 mm OD

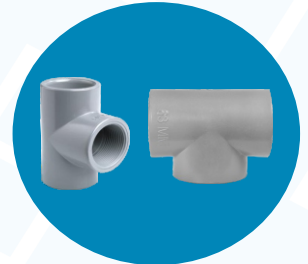


Socket Bend (Plain)

Mfg Range : 20 mm OD to 160 mm OD

Socket Bend (Threaded)

Mfg Range : 20 mm OD to 63 mm OD



Socket Tee (Plain)

Mfg Range : 20 mm OD to 160 mm OD

Socket Tee (Threaded)

Mfg Range : 20 mm OD to 63 mm OD

PVDF FITTINGS



Bend (90 Degree)

Mfg Range : 20 mm OD to 160 mm OD



Bend (45 Degree)

Mfg Range : 20 mm OD to 160 mm OD



Tee

Mfg Range : 20 mm OD to 160 mm OD



Coupler

Mfg Range : 20 mm OD to 160 mm OD



Slip On Flange

Mfg Range : 20 mm OD to 160 mm OD



Core Flange (LN)

Mfg Range : 20 mm OD to 160 mm OD



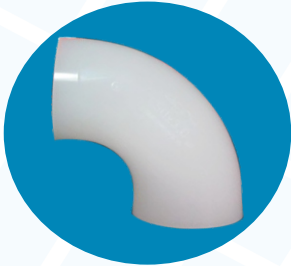
Reducer (Socket & But weld)

Mfg Range : 20 mm OD to 160 mm OD



Union

Mfg Range : 20 mm to 63 mm



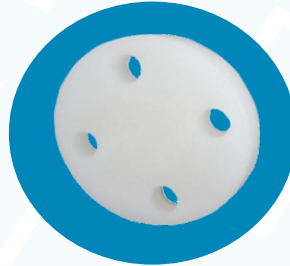
Buttweld Elbow

Mfg Range : 1/2" to 1"



Buttweld Tee

Mfg Range : 1/2" to 1"



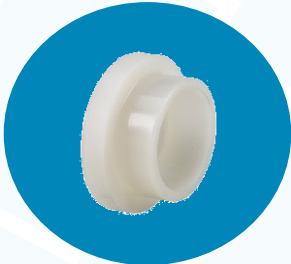
Blind Flange

Mfg Range : 20 mm to 160 mm



End Cup (Socket & But weld)

Mfg Range : 20 mm to 160 mm



Core Flange Socket

Mfg Range : 20 mm OD to 160 mm OD



COMPRESSION FITTINGS



Coupler

Mfg Range : 20 mm OD



Compression Elbow

Mfg Range : 20 mm OD



Elbow FTA

Mfg Range : 20 mm OD



Elbow MTA

Mfg Range : 20 mm OD



FTA

Mfg Range : 20 mm OD



ELBOW MTA

Mfg Range : 20 mm OD



MTA

Mfg Range : 20 mm OD



End Cap

Mfg Range : 20 mm OD



Blue Service Saddle

Mfg Range : 63 mm OD to 160 mm OD



Brass Ferrul

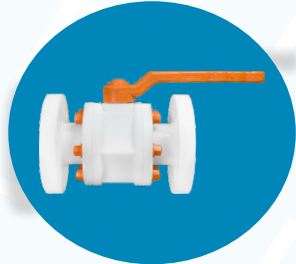
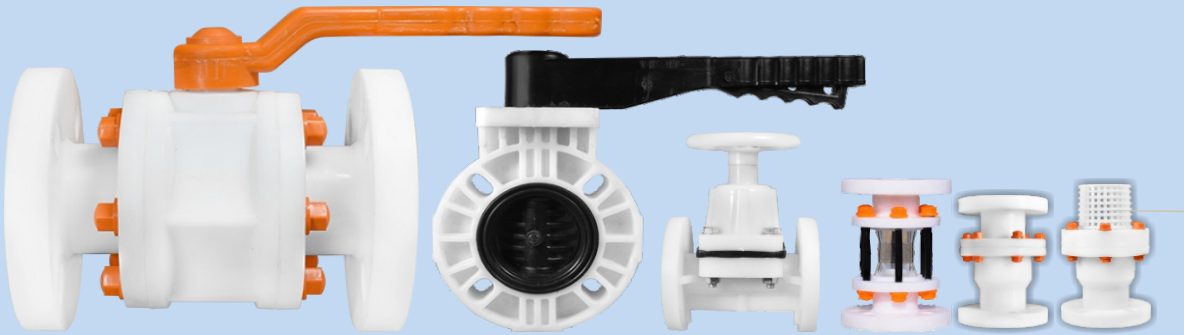
Mfg Range : 15 mm OD to 25 mm OD



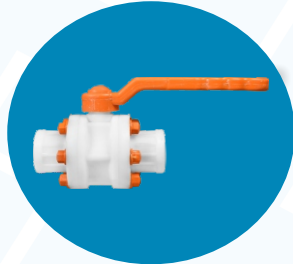
Flow Control Vale

Mfg Range : 15 mm OD





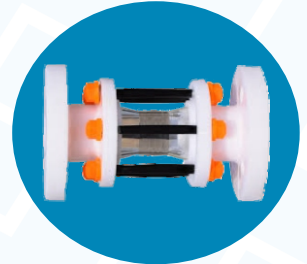
Ball Valves Flanged End
Manufacturing Range : 1/2" to 12"
M.O.C. : PP / ISO PP / HDPE / PPH / PVDF



Ball Valves Screw End
Manufacturing Range : 1/2" to 4"
M.O.C. : PP / ISO PP / PPH / PVDF



HDPE Ball Valves
Manufacturing Range : 1/2" to 12"
M.O.C. : HDPE



Sight Glass
Manufacturing Range : 1/2" to 12"
M.O.C. : PP / ISO PP / PPH / PVDF



Foot Valves Flanged End
Manufacturing Range : 1" to 12"
M.O.C. : PP / ISO PP / PPH / PVDF



Foot Valves Screw End
Manufacturing Range : 1" to 4"
M.O.C. : PP / ISO PP / PPH / PVDF



Ball NRV Flanged End
Manufacturing Range : 1" to 12"
M.O.C. : PP / ISO PP / PPH / PVDF



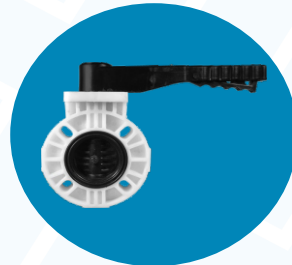
NRV Screw End
Manufacturing Range : 1" to 4"
M.O.C. : PP / ISO PP / PPH / PVDF



Diaphragm Valves Flanged End
Manufacturing Range : 1" to 6"
M.O.C. : PP / ISO PP / PPH / PVDF



Diaphragm Valves Screw End
Manufacturing Range : 1" to 2"
M.O.C. : PP / ISO PP / PPH / PVDF



Butter Fly Valves - Manual Operated
Manufacturing Range : 2" to 8"
M.O.C. : PP / ISO PP / PPH / PVDF



Butter-fly Valves - Gear Operated
Manufacturing Range : 2" to 16"
M.O.C. : PP / ISO PP / PPH / PVDF



Strainer (Y Type) Flanged End
Manufacturing Range : 1/2" to 6"
M.O.C. : PP / ISO PP / PPH / PVDF



Strainer (Y Type) Screw End
Manufacturing Range : 1/2" to 1 1/2"
M.O.C. : PP / ISO PP / PPH / PVDF



Striner (Basket Type)
Manufacturing Range : 1 1/2" to 6"
M.O.C. : PP

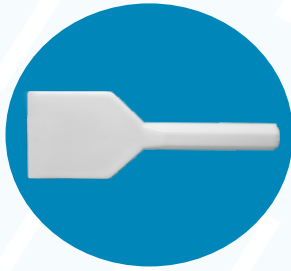


Damper Valves - Flanged End
Manufacturing Range : 4" to 12"
M.O.C. : PP

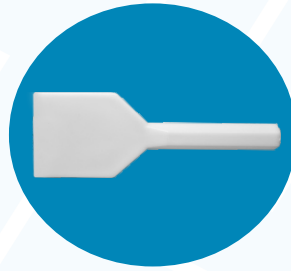
ENGINEERING ITEMS



Scoop
M.O.C. : PP



Scraper (Big)
M.O.C. : PP



Scraper (Small)
M.O.C. : PP



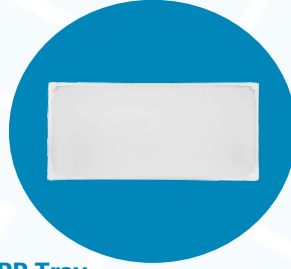
Impeller
Mfg Range : 16 x 32 x 1 1/4"
M.O.C. : PP



Poll Ring
Mfg Range : 1", 1 1/2", 2", 3"
M.O.C. : ISO PP



Drain Trap
Mfg Range : 4"
M.O.C. : HDPE



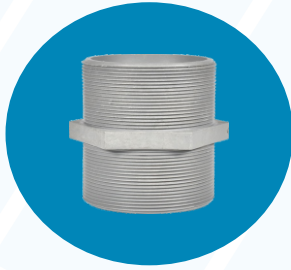
PP Tray
Mfg Range : 16" X 32" 1 1/4",
400 x 335 x 40, 600 x 335 x 40, 800 x 335 x 40,
900 x 335 x 40, 980 x 335 x 40



Threaded Nipple
Mfg Range : 20 mm OD to 63 mm OD
M.O.C. : PP



Hose Nipple
Mfg Range : 1" to 4"
M.O.C. : PP



Hex Nipple
Mfg Range : 20 mm OD to 90 mm OD
M.O.C. : PP



Tail Piece Flanged
Mfg Range : 32 mm OD to 110 mm OD
M.O.C. : HDPE

ENGINEERING ITEMS



PP Laboratory sink
Mfg Range : 600mm X 450mm X 300 mm,
560mm x 355mm x 245mm,
340mm x 340mm x 220mm



Oval Sink (S)
Mfg Range : 6" X 3", 9" X 3"



Bottle Trap



Tank Joint Chakki

WELDING PROCESS



BUTT FUSION

The principle of heat fusion is to heat two surfaces to a designated temperature, then fuse them together by application of a sufficient force. This force causes the melted materials to flow and mix, thereby resulting in fusion. When fused according to the pipe and/or fitting manufacturer's procedures, the joint area becomes as strong as or stronger than the pipe itself in both tensile and pressure properties. As soon as the joint cools to near ambient temperature, it is ready for handling.

The 6 steps involved in making a butt fusion joint are:

- Securely fasten the components to be joined
- Face the pipe ends
- Align the pipe profile
- Melt the pipe interfaces
- Join the two profiles together
- Hold under pressure



SOCKET FUSION

This technique consists of simultaneously heating both the external surface of the pipe and the internal surface of the socket fitting until the material reaches fusion temperature; inspecting the melt pattern; inserting the pipe end into the socket; and holding it in place until the joint cools. Figure 6.4 illustrates a typical socket fusion joint. Mechanical equipment is available and should be used for sizes larger than 2-inch diameter to attain the increased force required and to assist in alignment.

Follow These general steps when performing socket fusion:

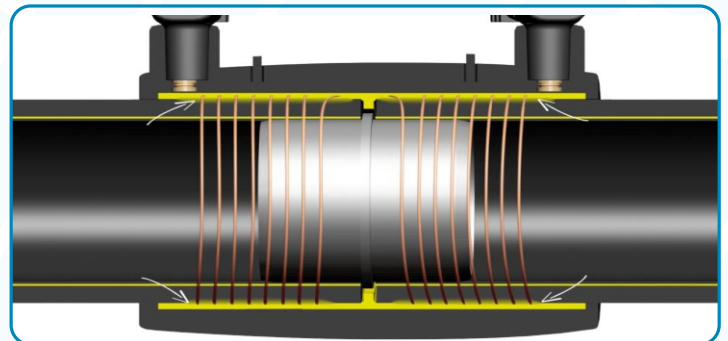
- Select the equipment
- Square and prepare the pipe ends.
- Align the pipe profile
- Heat the parts
- Join the parts
- Allow to cool

ELECTRO-FUSION WELDING PROCESS



HOW DOES ELECTRO FUSION WORKS

The characteristics of the fitting to be welded, such as the fusion time, are registered via a barcode on the fitting. An electrofusion control unit (ECU) supplies the electrical energy necessary to heat the coil. When the coil is energized, the material adjacent to it melts and forms an expanding pool which comes into contact with the surface of the pipe. The continued introduction of heat energy causes the pipe surface to melt and a mixing of pipe melt and fitting melt takes place; this is vital to produce a good weld. Following the termination of the heat cycle, the fitting and the pipe are left to cool and the melted material solidifies to form a sound joint.



LIST OF MAJOR CUSTOMERS

CHEMICAL AND FERTILIZER

TATA CHEMICALS LTD.
HINDUSTAL LEVER LTD.
MEGHMANI ORGANICS LTD.
METROCHEM INDUSTRIES LTD.
SOLARIS CHEMTECH LTD.
CHAMBAL FERTILIZERS LTD.
UNITED PHOSPHURS LTD.
AGROCEL INDUSTRIES LTD.
HPL
MERCHEM LTD.
GUJARAT HEAVY CHEMICALS LTD.
CHEMFAB ALKALIES LTD.
HINDUSTAN FLURO CARBON LTD.
SAJJAN INDIA PVT. LTD.
BODAL CHEMICALS
HINDUSTAN M.I. SWACO LTD.
INDIAN PHOSPHRUS LTD.
ADITYA BIRLA
SAM FINE O CHEM LTD.
SHREE SULPHURICS LTD.

OIL MFG. PLANTS.

ADANI WILMAR LTD.
ONGC LTC
INDIAL OIL CORPN LTD.
N.K. INDUSTRIES LTD.
PARAM INDUSTRIES LTD.
GOKUL REFOILS & SOLVENT LTD.
J.M.D. OILS PVT. LTD.

PHARMACEUTICALS

TORRENT PHARMACEUTICALS
DIVI'S LABORATORIES LTD.
ZYDUS CADILA LTD.
CADILA PHARMACEUTICALS LTD.
SUR PHARMACEUTICALS LTD.

TEXTILE AND CEMENT

NANDAN DENIM LTD.
ARVIND MILLS LTD.
HINDALCO IND. LTD.
ZINDAL LTD.
AMBUJA CEMENT LTD.

STARCS & SUGAR

RIDDHI SIDDHI GLUCO BOILS LTD.
SANTOSH STARCH LTD.
ANIL STARCH
GNFC LTD.
EXCEL CROP CARE LTD.

WATER TREATMENT PLANT

ION EXCHANGE (I) LTD.
DASHION LTD.
THERMAX LTD.

STEEL PLANTS

TATA STEEL LTD.
HINDUSTAN ZINC LTD.
BHISHAN STEELS & STRIPS LTD.
HINDALCO INDUSTRIES LTD.
JINDAL LTD.
BINANI ZINK LTD.
L & T STEEL
ESSAR STEEL
RATNAMANI METAL & TUBES

POWER PLANTS

GUJARAT ELECTRICITY LTD.
GSJ ENVO LTD.
ENERGREEN POWER PLANT
BHEL POWER LTD.
NTPC

WORKING WITH ENGINEERING CONSULTANTS :

GUJARAT ELECTRICITY LTD.
GSJ ENVO LTD.
ENERGREEN POWER PLANT
BHEL POWER LTD.
NTPC

GOVT. SECTOR

GETCO
GWSSB
AHMEDABAD MUNICIPAL CORPORATION

APPLICATIONS



PHARMACEUTICAL



AGRICULTURE & GARDEN



CHEMICAL AND FERTILIZER



WATER TREATMENT



OIL & GAS



DRAINAGE & PLUMBING

CERTIFICATION



APPROVED VENDOR FOR



INFRASTRUCTURE



CONTACT US

Address :

1051, Nr. Kothiya Patiya, Kuha Gam Road, On Kathwada-Indore Highway, Ahmedabad - 382433, Gujarat, (INDIA)

Mr. Prem Raol

Mo. +91 7600140068

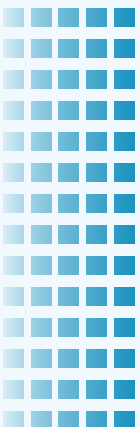
Mr. Harsh Gupta

Mo. +91 9711250432

Email

electrofusionfittings@gmail.com

cpplastic.dhruv@gmail.com

Web : www.chamundaplastics.com

COMMITTED TO QUALITY